

The first name in sample
preparation equipment

VCM Coater



VCM Coater at VTT, Finland

VCM Coater

For many years RK has been designing and building Versatile Converting Machines (VCM) for R&D, Pilot and Production applications used across many different types of industries. The VCM is optimised to the specific requirements of each process and can utilise higher specification drives, tension and web control equipment. The heavier framework also enables wider and heavier substrates to be processed while still allowing considerable flexibility to expand or modify the machine as developments or applications change.

VCM

APPLICATIONS

- Printable Electronics
- Security – Holograms
- Latent Imaging
- Medical Diagnostics
- Medical Dressings
- Fuel Cell and Batteries
- LCD Displays
- Aerospace Composites
- Polymeric Semiconductors
- Solar Reflective Films

The first name in sample
preparation equipment



VCML Lab/Pilot Coater



The VCML is designed to print, coat and laminate all types of flexible webs such as papers, films, and metallic foils on a reel-to-reel basis. With the ability to apply various coatings such as inks, paints, varnishes, adhesives both solvent and water based, by various application methods, this makes the VCML particularly useful for product development, quality control and small scale production for low volume of a specialised product.

Main Features

- Touch screen control system with graphical set-up and operating instructions.
- Servo drive with a speed range of 1–70 m/min.
- Rigid aluminium framework.
- Integrated electrical and pneumatic controls.



The first name in sample preparation equipment



VCML Lab/Pilot Coater



Integrated heating and extract system



Pneumatically operated ovens



Unwind and rewind 76mm core



Coating Station in optional ATEX Zone

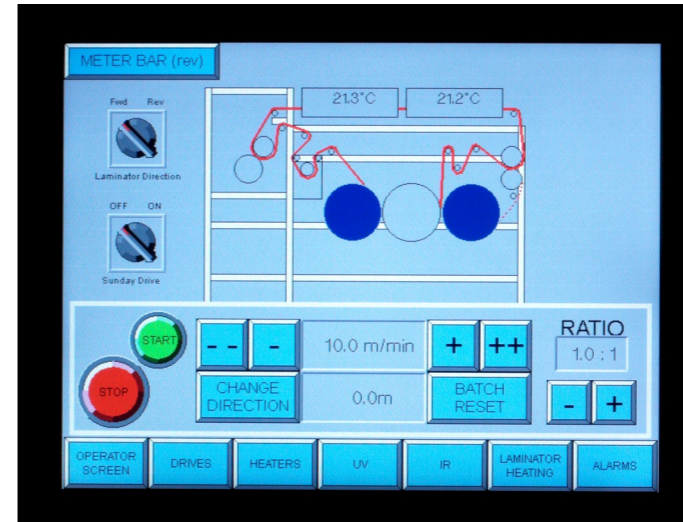
VCML SPECIFICATIONS

Web width up to 300mm

Rigid aluminium framework 2.5 m (L) x 1m (W) x 1.8m (H)

- Cantilevered unwind and rewind.
- Head mounting station with tray lift and trough.
- Laminator station with adjustable pneumatic nip.
- Servo drive with a speed range of 1—70 m/min.

Touch screen control system



VCML APPLICATIONS

- Meter Bar
- Gravure
- Direct Gravure
- Reverse Gravure
- Offset Gravure
- Differential Offset Gravure
- Flexo
- Knife Over Roll
- Slot Die
- Rotary Screen
- Air Knife
- Hot Melt extrusion

VCML OPTIONS

- Electronic tension control
- Hot air drying
- Heated laminator
- UV Curing
- Infra red
- Corona treatment
- Edge guide
- ATEX coating zone

VCML Reference List

- | | |
|------------------------|--|
| • Aitex, Spain | • Rotoflex |
| • Avery Dennison | • SCG Chemicals |
| • Brady | • Shin Etsu Inc |
| • Cosmo Films | • Sigmund Lindner GmbH |
| • DSM Resins | • Solvin |
| • Gascogne Emballage | • Temptime |
| • HB Fuller | • TokyoCello Label |
| • Henkel | • Toppan |
| • Honeywell, USA | • Zeon Corporation Takaota Plant |
| • Innovia | |
| • Matsuo Sangyo Co Ltd | • Further machines installed—names withheld. |
| • Medherant | |

